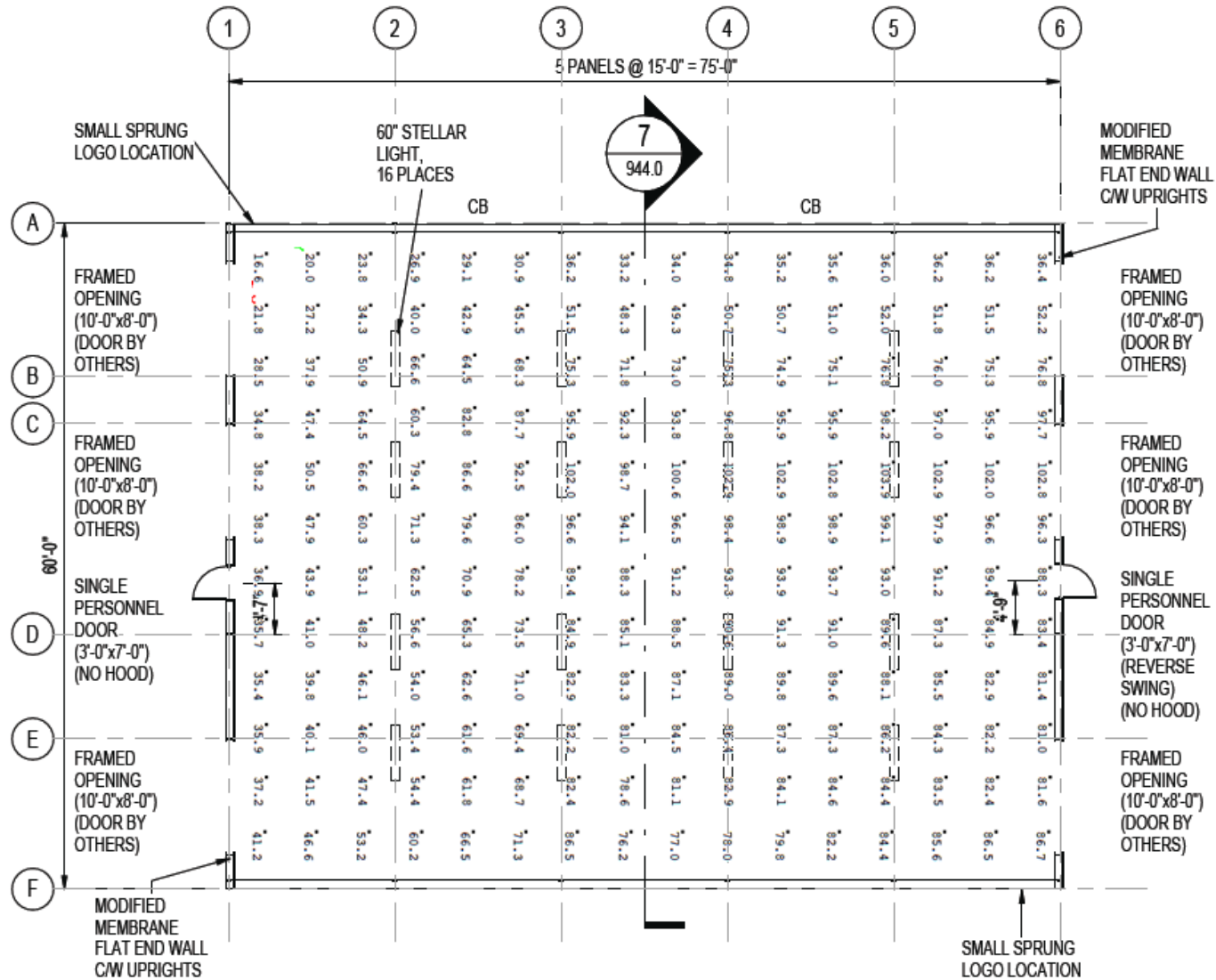


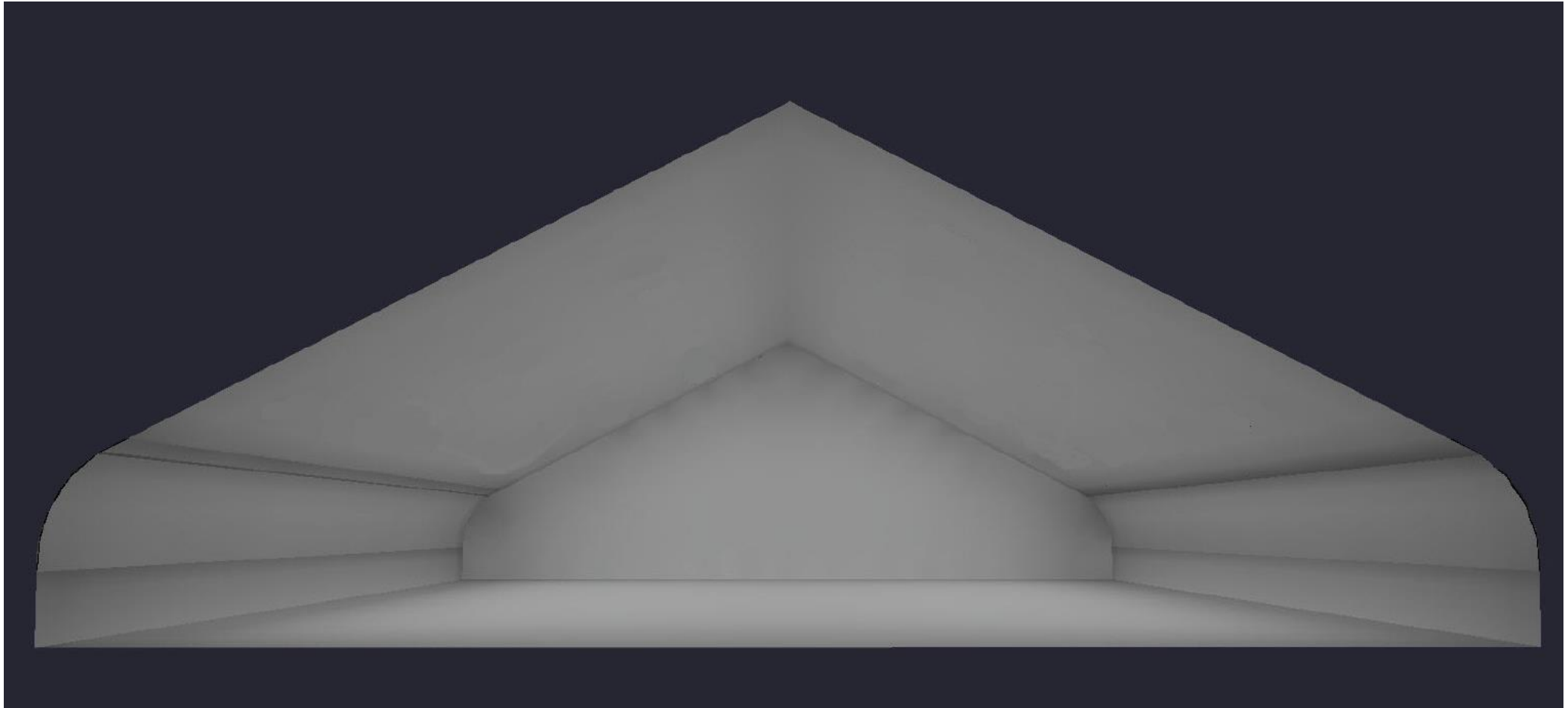


Car Repair Center

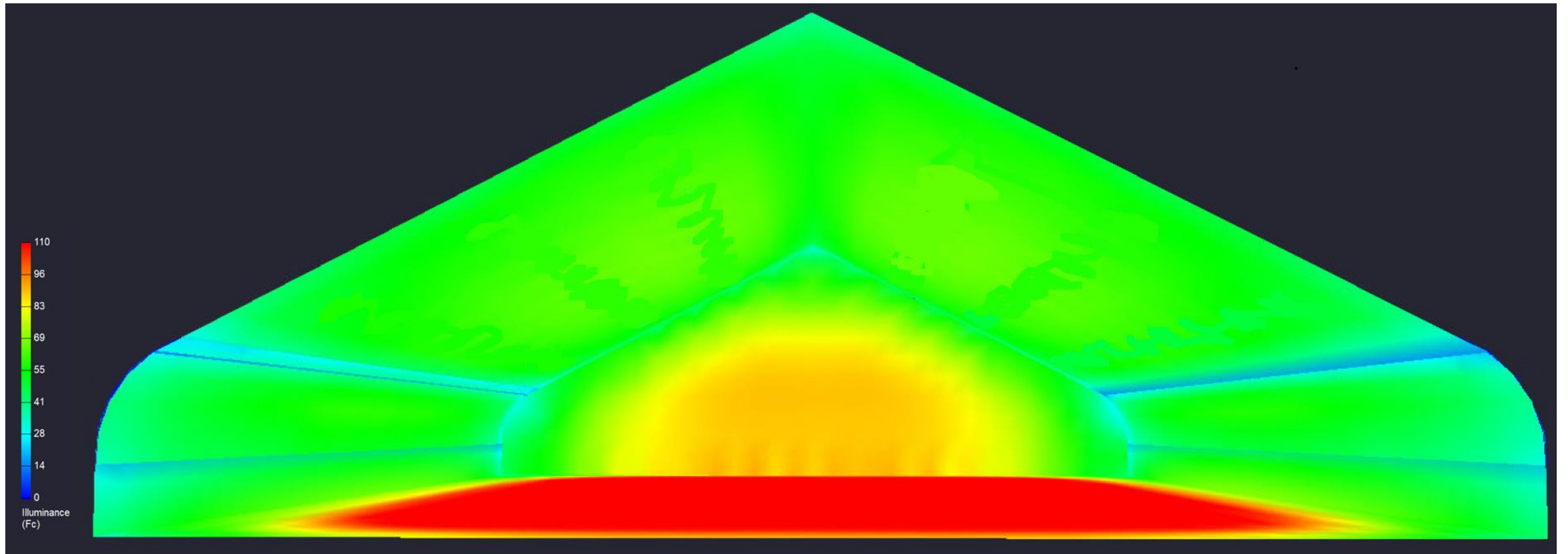
Foot Candle Renderings



Shadow Rendering



Pseudo Illuminance Rendering



Luminaire Summary

Luminaire Schedule						
Symbol	Qty	Label	Arrangement	Total Lamp Lumens	LLF	Description
	52	80L 277V	Single	N.A.	1.000	RT80L277V E4210588

Calculation Summary

Calculation Summary							
Label	CalcType	Units	Avg	Max	Min	Avg/Min	Max/Min
Room_1_Workplane	Illuminance	Fc	74.13	105.6	16.3	4.55	6.48
RoomEst_1_Workplane	Illuminance	Fc	74.13	105.6	16.3	4.55	6.48

Luminaire Location Summary

Coordinates In Feet

Expanded Luminaire Location Summary											
LumNo	Label	X	Y	Z	Orient	Tilt	X-Aimpt	Y-Aimpt	Z-Aimpt	TCF	
7	80L 277V	12.01	12.532	17.601	90	0	12.01	12.532	0	1	
9	80L 277V	60.007	12.532	26.037	90	0	60.007	12.532	0	1	
10	80L 277V	77.743	12.581	17.686	90	0	77.743	12.581	0	1	
11	80L 277V	30.063	24.994	26.037	90	0	30.063	24.994	0	1	
12	80L 277V	60.007	24.945	26.037	90	0	60.007	24.945	0	1	
13	80L 277V	12.01	24.945	17.601	90	0	12.01	24.945	0	1	
14	80L 277V	77.743	24.994	17.686	90	0	77.743	24.994	0	1	
15	80L 277V	30.063	37.563	26.037	90	0	30.063	37.563	0	1	
17	80L 277V	12.01	37.514	17.601	90	0	12.01	37.514	0	1	
18	80L 277V	77.743	37.563	17.686	90	0	77.743	37.563	0	1	
19	80L 277V	30.017	50.076	26.037	90	0	30.017	50.076	0	1	
20	80L 277V	59.961	50.027	26.037	90	0	59.961	50.027	0	1	
21	80L 277V	11.964	50.027	17.601	90	0	11.964	50.027	0	1	
22	80L 277V	77.697	50.076	17.686	90	0	77.697	50.076	0	1	
24	80L 277V	60.012	62.441	26.037	90	0	60.012	62.441	0	1	
25	80L 277V	12.015	62.441	17.601	90	0	12.015	62.441	0	1	
26	80L 277V	77.748	62.49	17.686	90	0	77.748	62.49	0	1	
27	80L 277V	30.039	75.02	26.037	90	0	30.039	75.02	0	1	
28	80L 277V	59.983	74.971	26.037	90	0	59.983	74.971	0	1	
29	80L 277V	11.986	74.971	17.601	90	0	11.986	74.971	0	1	
30	80L 277V	77.719	75.02	17.686	90	0	77.719	75.02	0	1	
31	80L 277V	30.194	87.434	26.037	90	0	30.194	87.434	0	1	
33	80L 277V	12.141	87.385	17.601	90	0	12.141	87.385	0	1	
34	80L 277V	77.874	87.434	17.686	90	0	77.874	87.434	0	1	
35	80L 277V	30.168	102.495	26.037	90	0	30.168	102.495	0	1	
36	80L 277V	60.112	102.446	26.037	90	0	60.112	102.446	0	1	
37	80L 277V	12.115	102.446	17.601	90	0	12.115	102.446	0	1	
38	80L 277V	77.848	102.495	17.686	90	0	77.848	102.495	0	1	
40	80L 277V	60.135	114.987	26.037	90	0	60.135	114.987	0	1	
41	80L 277V	12.138	114.987	17.601	90	0	12.138	114.987	0	1	
42	80L 277V	77.871	115.036	17.686	90	0	77.871	115.036	0	1	
43	80L 277V	30.191	127.553	26.037	90	0	30.191	127.553	0	1	
44	80L 277V	60.135	127.504	26.037	90	0	60.135	127.504	0	1	
45	80L 277V	12.138	127.504	17.601	90	0	12.138	127.504	0	1	
46	80L 277V	77.871	127.553	17.686	90	0	77.871	127.553	0	1	
47	80L 277V	30.139	140.018	26.037	90	0	30.139	140.018	0	1	
49	80L 277V	12.086	139.969	17.601	90	0	12.086	139.969	0	1	
50	80L 277V	77.819	140.018	17.686	90	0	77.819	140.018	0	1	
51	80L 277V	30.19	152.535	26.037	90	0	30.19	152.535	0	1	
52	80L 277V	60.134	152.486	26.037	90	0	60.134	152.486	0	1	
53	80L 277V	12.137	152.486	17.601	90	0	12.137	152.486	0	1	
54	80L 277V	77.87	152.535	17.686	90	0	77.87	152.535	0	1	
56	80L 277V	60.186	164.951	26.037	90	0	60.186	164.951	0	1	
57	80L 277V	12.189	164.951	17.601	90	0	12.189	164.951	0	1	
58	80L 277V	77.922	165	17.686	90	0	77.922	165	0	1	
59	80L 277V	30.19	177.517	26.037	90	0	30.19	177.517	0	1	
60	80L 277V	60.134	177.468	26.037	90	0	60.134	177.468	0	1	
61	80L 277V	12.137	177.468	17.601	90	0	12.137	177.468	0	1	
62	80L 277V	77.87	177.517	17.686	90	0	77.87	177.517	0	1	
63	80L 277V	30.138	190.086	26.037	90	0	30.138	190.086	0	1	
65	80L 277V	12.085	190.037	17.601	90	0	12.085	190.037	0	1	
66	80L 277V	77.818	190.086	17.686	90	0	77.818	190.086	0	1	