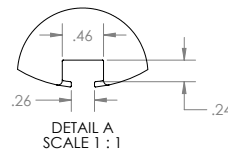
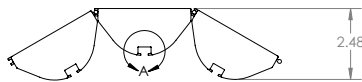


OVERVIEW

EStar's Wave LED smart technology is a breakthrough in traditional lighting and has solved the issues faced by the challenges of current LED technology-inefficient power conversion, excessive hardware replacement costs, and the need for traditional heat syncs, drivers and ballasts.

RT-SERIES Wave Technology



SPECIFICATIONS

OPTICAL SPECIFICATIONS PER EACH MODULE			
Lumen Output	1800 lm	Beam Angle (°)	120°
CCT (K)	2700,4000,6000	Projected Lifetime	> 100,000 h
CRI (Ra)	> 70	Lumen Maintenance Factor	70%
Efficacy (lm/W)	120lm/W	Chromaticity Shift	±120K
ELECTRICAL SPECIFICATIONS			
Power	15 Watts	Current Draw at 120V	171mA
Apparent Power (VA)	16.2(VA)	Current Draw at 208V	103mA
System Wattage (W)	15 Watts	Current Draw at 240V	91mA
Input Voltage	95- 305VAC	Current Draw at 277V	79mA
LED & DRIVER SPECIFICATIONS			
LED (Brand)	XuYu	Power Factor	> .90
LED Design Origin	China	THD	< 20%
LED Type	5730	Surge Protection	10kV
Dimmable	Yes	Input Frequency (Hz):	50/60Hz
Lifetime Rating:	65,000 hours @ 60° C		

Mounting: A standard bolt will fit in the slots: 1/4", 3/8", 1/2"

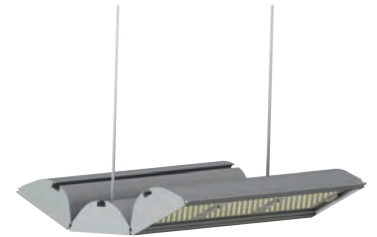
Shielding: UL Rated Polycarbonate

Finish: Anodized Aluminum

Warranty: 5 Years standard

Listings: ETL (Preliminary)

Files Available: Upon Request



PRODUCT HIGHLIGHTS

Manages and self-protects against power and heat fluctuation (dirty power)

Summary Reports on Power outages and issues

Easily remove or add lights without adding more wires and hassle

Significantly lower heat than traditional lighting

5-year warranty

Razortek Lighting Value

Energy/Maintenance Savings (50% to 90%+)

Longevity

- Handles Dirty Power
- Multiple Voltage
- Internal Thermostat adjusts

Communication

- Existing Wires (1-Way Comm, and control lights)
- New Wiring (2-way comm, allows for feedback and monitoring)

Retrofit

- 250 different existing fixtures

Modular (Legos for lights)

- Reduce Inventory (Us and Electricians)
- Install Light Flexibility (Long, Square, Small)
- New or Old Fixtures